

8' high, 8" Poured Concrete walls
 - w/ 2 #4 re-bar 6" down from the top edge
 - w/ 7' vertical #4 re-bar, 2' o.c. at all 8' walls
 - on 8 x 16" footing reinforced w/ 2 #4 re-bar

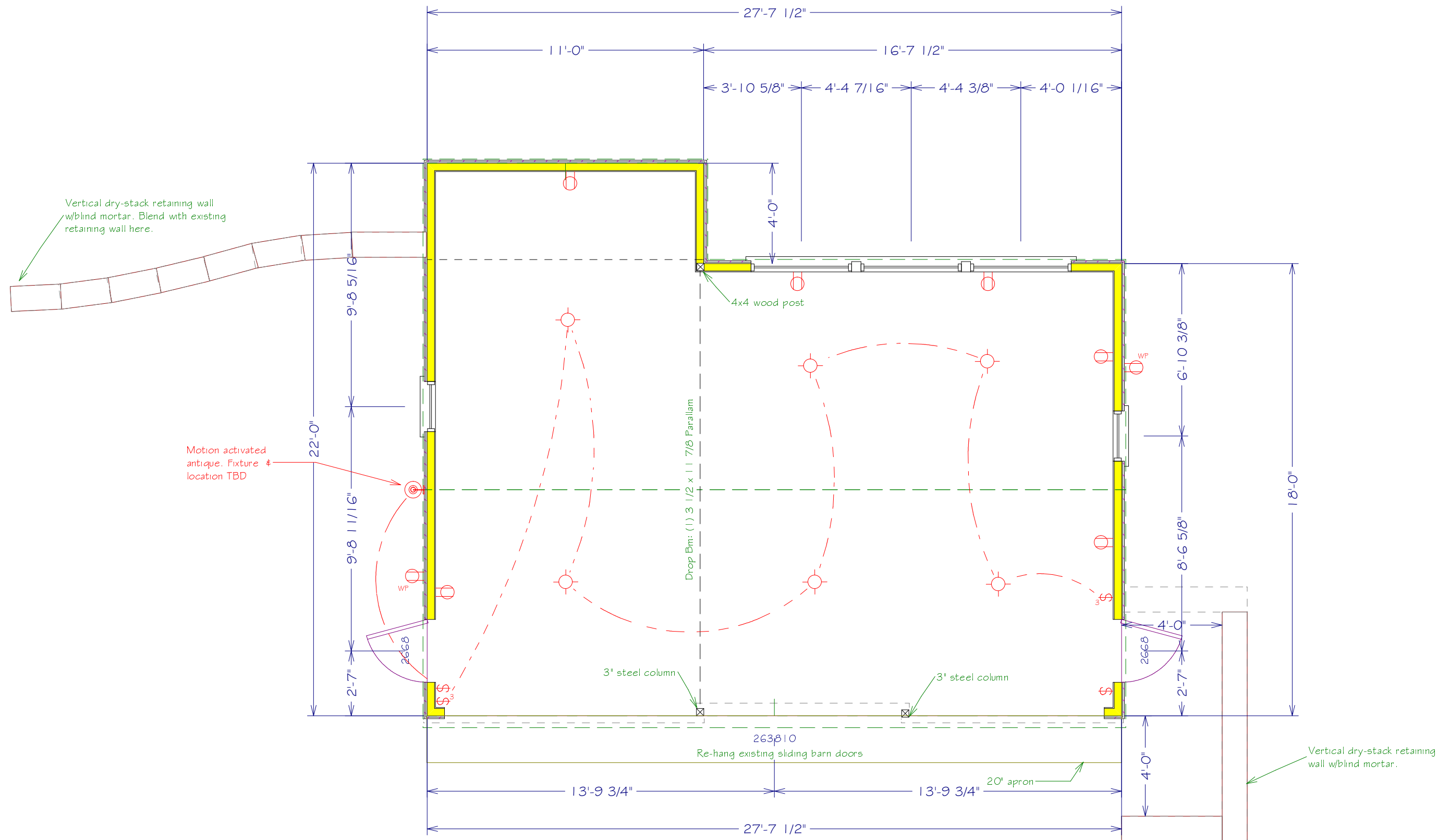
12" x 5/8" anchor bolts at 4'oc, 1' from corners/openings



Section A

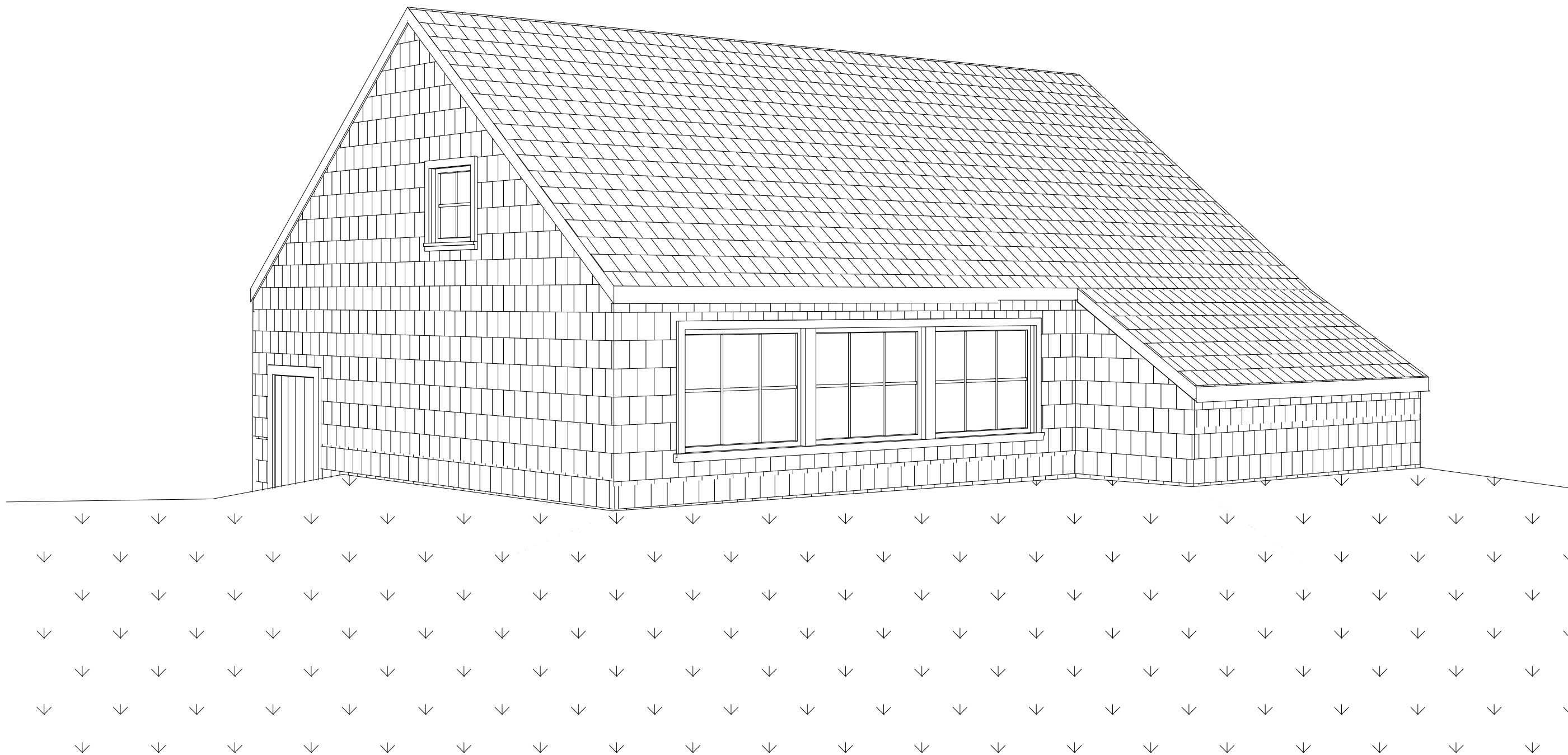
Foundation Plan

Carl Sorenson Sagaponac, NY Relocated Barn/Garage	<small>Copyright (c) 2005, All rights reserved.</small> David A. Webb, Inc. Design, Drafting, Engineering, General Contracting 516 - 982 - 8502			
	Date 5/16/05	Drawn by DW	Scale 1/4" = 1'	Sheet
New Foundation				

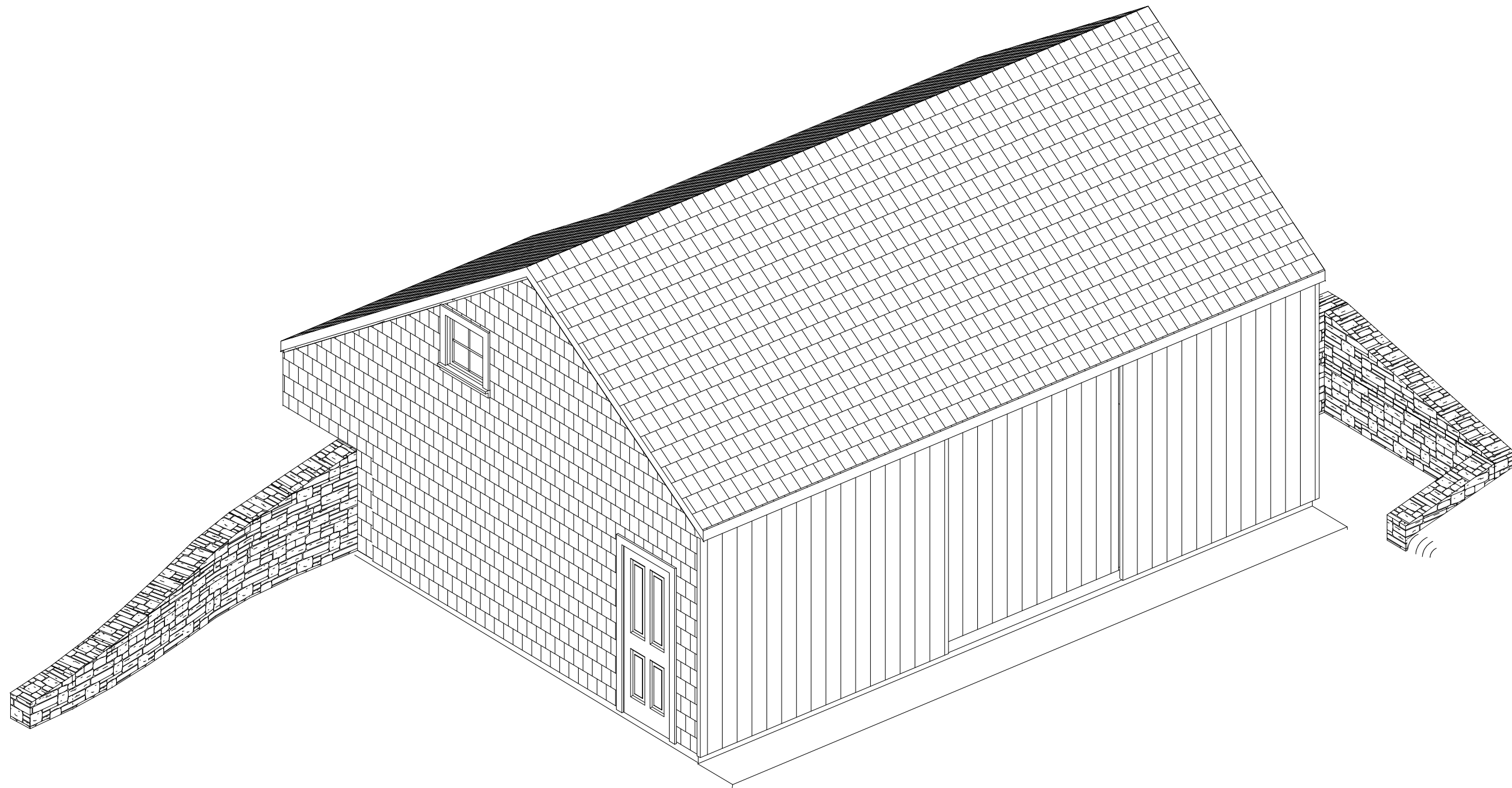


Existing Barn to be Relocated

<p>Carl Sorenson Sagaponac, NY</p> <p>Relocated Barn/Garage</p>	<p>Copyright (c) 2005, All rights reserved.</p> <p>David A. Webb, Inc.</p> <p>Design, Drafting, Engineering, General Contracting</p> <p>516 - 982 - 8502</p>			
	<p>First Floor Plan</p>	<p>Date 5/16/05</p>	<p>Drawn by DW</p>	<p>Scale 1/4" = 1'</p>



Carl Sorenson Sagaponac, NY Relocated Barn/Garage	<small>Copyright (c) 2005, All rights reserved.</small> David A. Webb, Inc. Design, Drafting, Engineering, General Contracting 516 - 982 - 8502			
	Northeast Perspective	<small>Date</small> 5/16/05	<small>Drawn by</small> DW	<small>Scale</small> 1/4" = 1' <small>Sheet</small>



Carl Sorenson
Sagaponac, NY

Relocated Barn/Garage

Copyright (c) 2005, All rights reserved.

David A. Webb, Inc.

Design, Drafting, Engineering,
General Contracting

516 - 982 - 8502

Southeast Overview

Date	Drawn by	Scale	Sheet
5/16/05	DW	1/4" = 1'	